

Ball Bearings For Electric Motors

Regal Beloit Belgium Bulletin
ISO 9001 certified

ROLLWAY®

Ball Bearings For Electric Motors

Rollway® Product Info

ROLLWAY ELECTRIC MOTOR QUALITY “EMQ” BALL BEARING VERSIONS

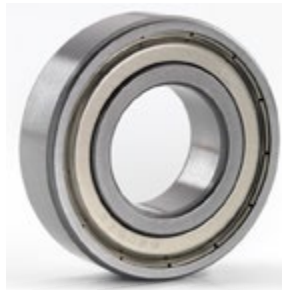
ROLLWAY Ball Bearings for Electric Motors are available in standard, C3 & C4 clearances.

Open Bearing - 6203 EMQ



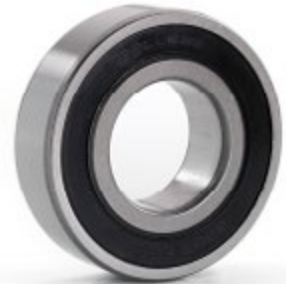
Max. Operating Temp. = 150°C

Shielded Bearing - 6203 ZZ EMQ

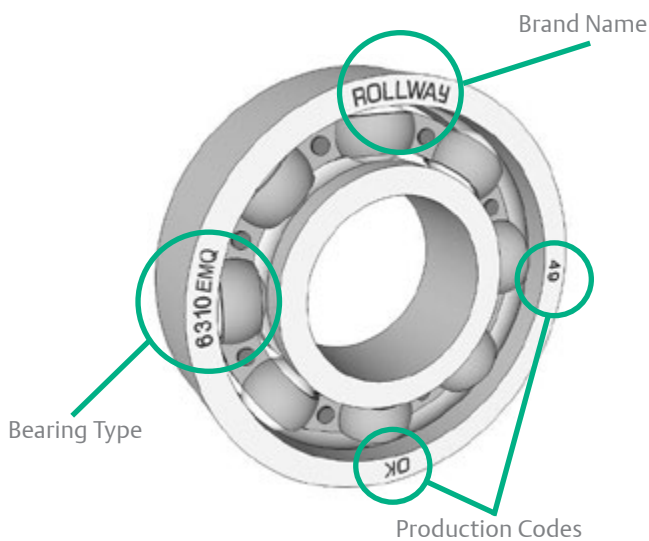


Max. Operating Temp. 120°C *
Grease: Polyrex EM
Shields: Steel

Sealed Bearing - 6203 2RS EMQ



Max Operating Temp. 100°C *
Grease: Polyrex EM
Seals: Synthetic Rubber



BEARING MARKING

The bearing is marked according to ROLLWAY-standard. The production codes contain information about the plant and production time and are necessary for traceability purposes.

* Although the grease can sustain temperatures up to the maximum operating temperature noted, the life of the grease and consequently the bearing will be reduced when operating at temperatures over 80°C.

A Regal Brand

REGAL

Specification Sheet

ROLLWAY® BALL BEARINGS FOR ELECTRIC MOTORS

NOISE LEVEL SPECIFICATION

- Produced to standard P6 according to ISO 492-1981 and is equivalent to ABEC 3.
- Noise Level is according to the shown specification sheet.



DEEP GROOVE BALL BEARING NOISE LEVEL SPECIFICATION Specification of Anderon test (A)

Bore (mm)	Low Band	Medium Band	High Band	Preload (N)
3	31	16	15	20
4	31	16	15	
5	35	21	18	
6	35	21	18	30
7	44	28	24	
8	44	28	24	
9	44	28	24	40
10	55	35	30	
12	55	35	30	
15	65	46	35	80
17	65	46	35	
20	80	60	45	
22	80	60	45	120
25	80	60	45	
28	80	60	45	
30	90	75	60	180
32	90	75	60	
35	90	75	60	
40	110	90	80	225
45	180	150	130	
50	210	160	160	
55	210	180	180	180
60	240	180	200	
65	130	100	150	
70	150	120	200	225
75	150	120	200	
80	180	120	240	
85	180	150	240	225
90	210	180	270	
95	210	180	270	
100	250	215	310	

ROLLWAY®

Regal Beloit Belgium nv
Heiveldekens 16
2550 Kontich, Belgium

Tel: +32 (0)3 457 68 70

Fax: +32 (0)3 457 51 38

E-mail: info-belgium@regalbeloit.com

www.RegalPTS.com

APPLICATION CONSIDERATIONS

The proper selection and application of power transmission products and components, including the related area of product safety, is the responsibility of the customer. Operating and performance requirements and potential associated issues will vary appreciably depending upon the use and application of such products and components. The scope of the technical and application information included in this publication is necessarily limited. Unusual operating environments and conditions, lubrication requirements, loading supports, and other factors can materially affect the application and operating results of the products and components and the customer should carefully review its requirements. Any technical advice or review furnished by Regal Beloit America, Inc. and its affiliates with respect to the use of products and components is given in good faith and without charge, and Regal assumes no obligation or liability for the advice given, or results obtained, all such advice and review being given and accepted at customer's risk.

For a copy of our Standard Terms and Conditions of Sale, Disclaimers of Warranty, Limitation of Liability and Remedy, please contact Customer Service at 1-800-626-2120. These terms and conditions of sale, disclaimers and limitations of liability apply to any person who may buy, acquire or use a Regal Beloit America Inc. product referred to herein, including any person who buys from a licensed distributor of these branded products.

Rollway is a trademark of Regal Beloit Corporation or one of its affiliated companies.
©2015 Regal Beloit Corporation, All Rights Reserved. MCFB15009E • Form# 9822E

LUTZ ROGALLA GmbH
In der Au 8a
D-74889 Sinsheim

Tel +49 7261-9180-0
Fax +49 7261-9180-20
contact@rogalla.de



ROGALLA®
WÄLZLAGER · DREHVERBINDUNGEN
WWW.ROGALLA.DE